

# Introducing LX LoRa Connect

## Ultimate Long-Range Wireless Integration System for Perimeter Security



### LONG-RANGE

Extensive coverage and connectivity with up to 10km wireless range



### WIRELESS

No data cabling required, enabling streamlined cost-efficient installations



### EASY INTEGRATION

Seamless integration with existing systems and third-party devices

## Why GJD's LX LoRa Connect Solution?

Revolutionise your perimeter protection projects with the cutting-edge LX LoRa Connect. Our innovative solution offers wireless, long-range and seamless integration, combined with unparalleled flexibility, and hassle-free installation, making it the perfect choice for any perimeter security application.

# LX LoRa Connect Products

## LX GateWay (GJD1200)

Wireless central command hub

- » Local relay outputs and alarm inputs for enhanced control
- » PoE Powered and IP connectivity for seamless integration
- » Open API for effortless 3rd party integration
- » Supports existing GJD IP detectors and lights, optimising your current system



## D-TECT LX (GJD1230)

High-Performance external wireless PIR

- » 30x30m coverage for comprehensive coverage
- » Battery powered monitor/alerts for continuous reliability
- » Lux and temperature alerts for advanced environmental monitoring
- » IP65 high impact ABS housing, built to withstand the elements



## LX Walk Tester (GJD1260)

Useful installation tool to assist setup

- » Timesaving and reduced operational burden tool for installation engineers
- » Audible and visual detection notifications for efficient testing
- » LED signal strength indicator for accurate signal assessment
- » Battery-powered for on-the-go testing



## LX I/O Module (GJD1220)

Versatile 3rd party integration with up to 10km range

- » One input and one output, providing versatility
- » Battery powered monitor/alerts for continuous operation
- » Seamless integration with 100+ third-party devices
- » IP65 High impact ABS housing for robust durability



## LX WL Illuminator (GJD1410)

White-Light Illuminator

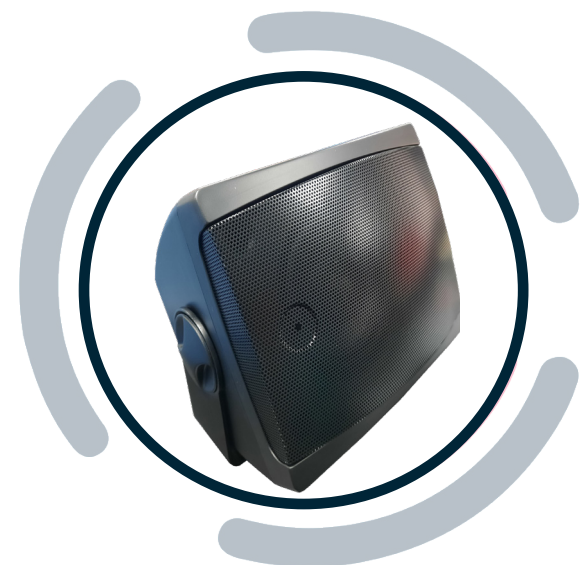
- » Osram LEDs with an elliptical optical system for bright and efficient lighting
- » Polycarbonate high transmission lens with CleanLITE® technology, reducing maintenance
- » Interchangeable elliptical beam diffuser system providing precise light focus for all security requirements
- » Robust high-quality black anodised aluminium extrusion, ensuring durability even in tough conditions



## LX Speaker (GJD1210)

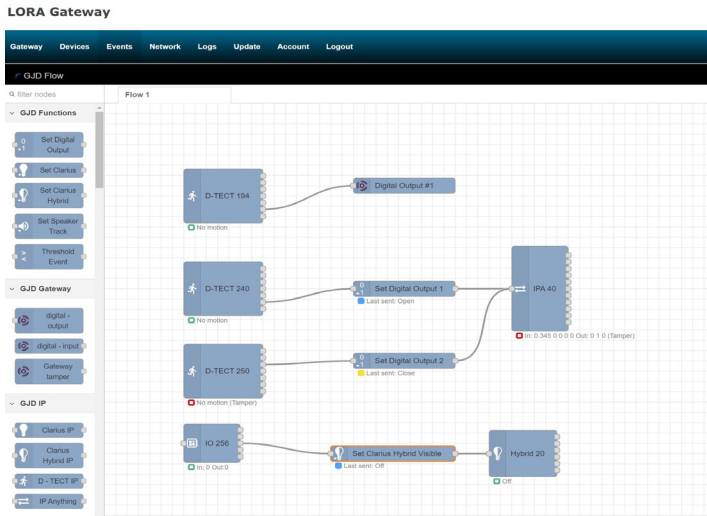
Wireless high-volume speaker up to 10km range

- » 4 channels with built-in microphone for clear audio announcements
- » Available in black or white to suit requirements
- » IP44 enclosure for reliable sheltered outdoor use
- » 1 Watt audio amplifier for powerful sound output



# Flow Based User Interface

## User Friendly Web-Browser Interface











» Quick setup, no software or installation needed

» Provides flexibility as it enables users to adjust settings from anywhere, at anytime

» User-friendly interface providing simple drag and drop interactions

» Visual workflow providing users with a clear view of actions and triggers

## Key Features and Benefits

- 
**Long-Range**  
 Extensive coverage and connectivity with up to 10km wireless range
- 
**Wireless**  
 No data cabling required, utilise streamlined cost-efficient installations
- 
**Flexibility**  
 Customisation with 3rd party integration using the I/O Module
- 
**Easy Integration**  
 Seamless integration with existing and 3rd party systems using the open API
- 
**Zone Management**  
 Effortlessly manage and monitor multiple zones remotely
- 
**Rapid Deployment**  
 Flow-based user interface and wireless components
- 
**Cost-Effective**  
 Eliminate extensive cabling and reduce consumable costs
- 
**Logic Control**  
 Simplify operations with integrated built-in logic control functions

Schedule a consultation with our security experts to discover the advanced capabilities of the LX LoRa Connect.

w: [www.gjd.co.uk](http://www.gjd.co.uk)

t: +44 (0) 1706 363 998

e: [sales@gjd.co.uk](mailto:sales@gjd.co.uk)

Unit 2, Birch Business Park, Whittle Lane, Heywood,  
Greater Manchester, OL10 2SX, UK

