

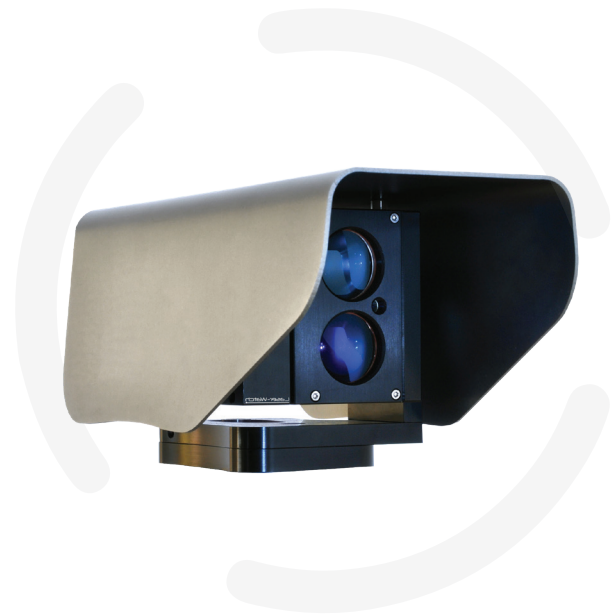
Laser-Watch Laser surveillance

Laser-Watch technology allows the user to monitor and locate intrusions for applications where physical fences are not desirable, possible or where enhanced security is required.

The 500m laser surveillance sensor works without reflectors and reacts in fractions of a second.

As well as intrusion detection, the Laser-Watch knows the exact position of an object.

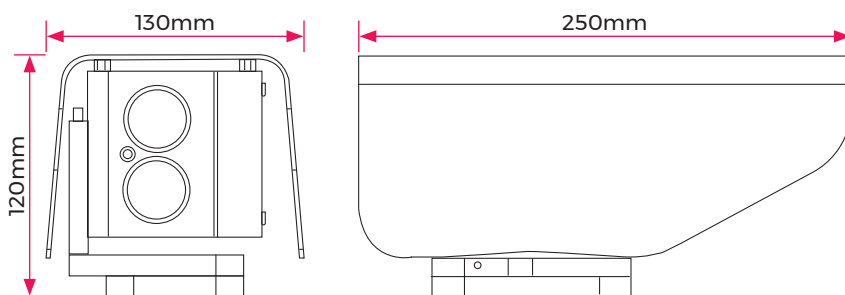
Alarm settings are extremely adaptable. For example, the sensor can be set to react only on cars in a specific lane and alarm if an object has stopped or if a door opens, whilst ignoring all over activities.



PRODUCT CODES

GJD515 Laser-Watch surveillance sensor

DIMENSIONS



FEATURES

- Up to 500 metre range, no reflector required
- Virtual fence able to trigger alarm and camera recording
- Fully adaptable alarm zones to meet any situation
- Near zero false alarm rate
- Heavy duty water proof design
- Intuitive and powerful web based user interface
- IP alarms and relay output
- Power over ethernet

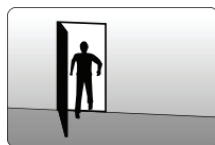
*Not compatible with lighting control applications



FIELD OF APPLICATION	Outdoor surveillance and monitoring
ALARM ZONES	Up to 20 fully adaptable zones, each zone has individual alarm sensitivity settings and alarm actions
ALARM ACTIONS	Network alarm, relay. Easy direct integration with IP to VMS, enabling PTZ control, automatic video recording and object position
SELF AWARENESS	Adaptive digital processing algorithm suppresses noise from fog and snow, and detects challenging weather to allow alarms to VMS
DETECTION RANGE	0 - 500 metres
DETECTION RESOLUTION	+/- 1 dm
UPDATE RATE	250 Hz
LASER WAVELENGTH	905nm
BEAM DIVERGENCE	2.0 x 2.0 mRad
ALIGNMENT LASER	Yes
LASER CLASS	Class 2 laser product, eye-safe
POWER SUPPLY	Power over Ethernet (48V DC) or 12 V DC
POWER CONSUMPTION	4W (PoE class 2)
OPERATING TEMPERATURE	-30°C to +60°C
INTERFACE	Ethernet IEEE 802.3af, TCP/IP, web browser used interface
RELAY SWITCH	Max 30V 200mA, NC and NO
MOUNTING	4 x M5 - Bosch compatible (73 x 41mm) 4 x M5 - Axis compatible (40 x 62mm) 2 x M6 - Common standard (73mm C-C) 5/8"-11 UNC (Tripod mount)
ENCLOSURE RATING	IP66
COLOUR	Shell: grey, sensor: black
WEIGHT	2.4Kg

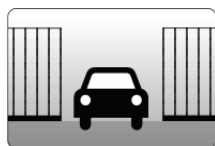
Perimeter control

GJD Laser-Watch technology makes it possible to monitor and locate intrusions for applications where physical fences are not desirable, possible or where enhanced security is required. The laser sensors work without reflectors and react in fractions of a second.



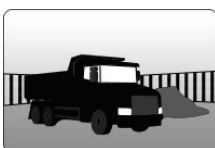
Gate monitoring

Monitor all passages through gates, entrances or specific parts of a road - even with the Laser-Watch sensor placed several hundred metres away. Create alarm zones freely to make sure the system only triggers an alarm when an object is detected at the desired location.



Vehicle monitoring

Laser-Watch is easily configured to detect if a vehicle is moved. Even if the detector is fitted several hundred metres away from the vehicle, the sensor instantly alarms when a movement of the current vehicle occurs; while all other objects in the area are ignored.



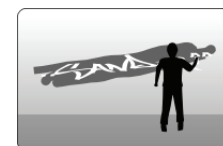
Boat detection

Detect all boats entering or leaving the harbour and reduce the risk of boat and engine thefts, regardless of light conditions and weather. GJD Laser-Watch products are designed to cope with harsh marine environments. Since the sensor works without reflectors it is possible to create virtual fences over open water or along the deck of an ocean going vessel.



Graffiti

Laser-Watch can be mounted on a tripod and moved as needed, to ensure fast and accurate operation in exposed locations. Surveillance can be achieved remotely and no camera permissions are required.



Stake-out operations

Laser-Watch makes it possible to automatically create a detailed log of visitors entering or leaving a building or to send alarms at a distance up to 500 metres.

