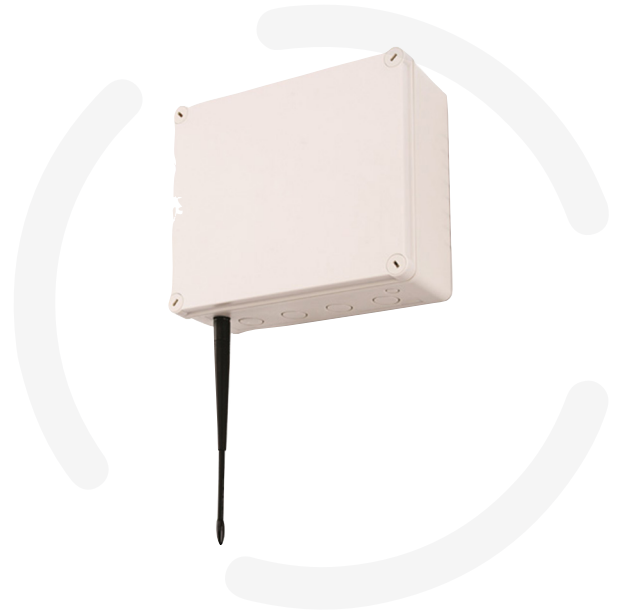


D-TECT X Receiver

The D-TECT X Receiver is an IP55 weatherproof, tamper protected, four channel unit equipped with two volt free & two negative switched outputs per channel. It can be expanded by the addition of up to 3 four channel expansion modules to allow the receiver unit to monitor the active state of up to 16 wireless D-TECT X movement detectors.

PRODUCT CODES

GJD392 D-TECT X Receiver



D-TECT X Repeater

The D-TECT X Repeater can be used to extend the RF range of a D-TECT X detector, or to boost signal in a poor reception area.

The D-TECT X Repeater must be placed within 500 metres line of sight between the D-TECT X detector(s) and D-TECT X Receiver(s). The unit will repeat all signals from D-TECT X detectors within range and as such does not require any programming to function.

PRODUCT CODES

GJD397 D-TECT X Repeater





ACCESSORIES

GJD393	4 detector expansion module
GJD394	Wireless signal strength & detection tester
GJD396	D-TECT X and signal walk tester kit

COMMUNICATION RANGE	Up to 500 m (line of sight)
COMMUNICATION CODES	16,700,000, 868MHz
POWER INPUT	12 - 24V AC/DC
INDICATORS (PER DETECTOR)	1 x LED Detection 1 x LED Tamper 1 x LED RF loss 1 x LED Low battery indication
OPERATING TEMPERATURE	-20°C to +55°C Conformally coated electronics for increased stability
CONNECTIONS	1 x program socket for detectors. Expansion socket for connection to additional modules
OUTPUTS (PER DETECTOR)	2 volt-free, silent solid state magnetically immune contacts 2 neg. switched plus one common tamper (front and rear switches) 1 RF Loss 1 Low battery
CAPACITY	4 detector module fitted as standard 3 slots for additional 4 channel expansion modules (total 16 detectors)
CASE	High impact, flame retardant, UV stabilized Polycarbonate
PROTECTION HOUSING	Minimum IP55
DIMENSIONS	210 x 180 x 75 mm (excluding aerial)
WEIGHT	658g NET, 720g GROSS

D-TECT X Receiver features

- The weatherproof IP55 receiver enclosure can be mounted externally or internally up to 500 metres in line of sight to the detectors
- Code recognition programming of each detector is both rapid and simple via a plug-in connector between detector and receiver
- As a system check, every one of up to 16 detectors automatically sends out a signal every 2 or 15 minutes to confirm that they are active. If a return signal is not received from a registered and recognised detector, a 'RF Loss' LED switches on and the contact is activated at the receiver
- An RF continuity test mode facility tests the strength of the RF signal from each detector at the receiver location. When it is necessary to conduct a site survey prior to installation, the receiver can be powered temporarily with a PP3 9 V battery
- The D-TECT X receiver is powered by a 12 - 24V AC/DC supply

Expansion module features

- The D-TECT X receiver is supplied as standard with a 4 channel module pre-installed. There are also expansion slots which will accommodate up to 3 additional 4 channel modules giving a total of 16 channels. Therefore the receiver is able to control and monitor up to 16 D-TECT X detectors
- An expansion module is connected via the ribbon connector to the circuit board of the pre-installed 4 channel module and is simply slid into the next available mounting slot in the receiver enclosure
- The process is repeated by connecting additional expansion modules using the next available connector slot on the ribbon