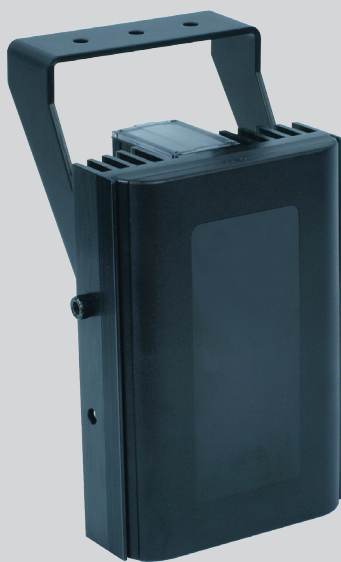


Clarius®



Large IR LED Illuminator

The **Clarius® Plus** range of high performance Infra-Red LED illuminators are designed to provide class leading performance, long life and ultra low maintenance.

Incorporating the latest surface mount **Dual Core®** LED's with enhanced optical output and outstanding reliability, they deliver excellent night-time images.

Each unit is fitted with integrated control circuitry to carefully control LED output, delivering consistent illumination and projected working life in excess of 10 years.

The **Clarius® Plus** range of illuminators includes a new interchangeable lens diffuser system; which allows the user to quickly and easily alter the angle of illumination. Elliptical beam profiles allow more light to be delivered where it is needed, allowing both longer distances and minimising light wastage. The system also helps to prevent overexposure of foreground objects.

As standard the illuminator includes interchangeable lensing to deliver 10°, 30°, 60°, 80° and 95° elliptical beam profiles.

Installation is quick and easy, requiring only 12-32V DC / 24V AC +/- 10%.

PRODUCT CODES

IL-8 Large Clarius PLUS Infra-Red Illuminator 850nm

IL-9 Large Clarius PLUS Infra-Red Illuminator 940nm

FEATURES

Latest Dual Core® SMT LED technology
Distances up to 228m (748')
Angle 10°, 20°, 30°, 60°, 80° & 95°
Elliptical beam profiles
850nm or 940nm wavelengths
Low power consumption (39W)
Long life
5 year warranty
IP66 weather proof rating
Built-in photocell IR on/off photocell following contact
Photocell following contact
Telemetry input for remote switching
12-32V DC / 24V AC +/- 10%
CleanLITE® self cleaning lens coating technology
High quality anodised aluminium heatsink
Pressure equalisation vent

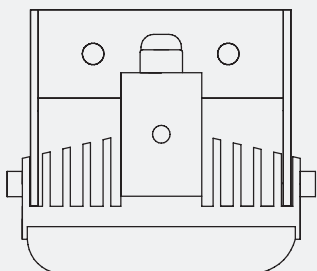
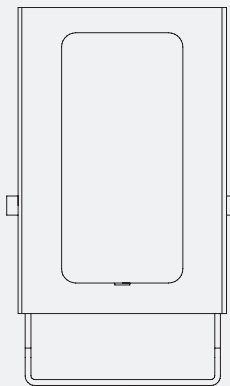
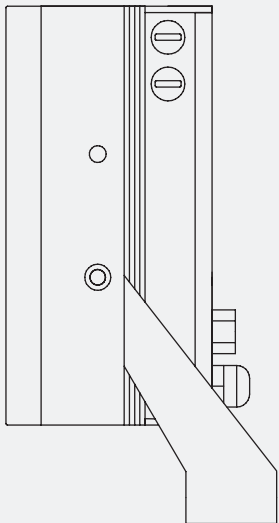


Recommended PSU ALT-60-24



Product Code	Wavelength	Angle	Distance		FOV	
IL-8	850nm	10° - Circular	228m	748'	40m	131'
		20° - Elliptical	156m	510'	55m	180'
		30° - Elliptical	114m	374'	61m	201'
		60° - Elliptical	73m	238'	84m	275'
		80° - Elliptical	52m	170'	87m	285'
		95° - Elliptical	36m	119'	79m	260'
IL-9	940nm	10° - Circular	140m	459'	24m	80'
		20° - Elliptical	98m	320'	34m	113'
		30° - Elliptical	79m	260'	42m	139'
		60° - Elliptical	49m	160'	56m	185'
		80° - Elliptical	37m	120'	61m	202'
		95° - Elliptical	24m	80'	53m	175'

TECHNICAL SPECIFICATIONS



GENERAL

Electronics

High Efficiency Surface Mount High Power **Dual Core®** LED's with Advanced Current Limited Integral Control Circuitry

Construction

Robust High Quality Aluminium Extrusion

Front Window

Polycarbonate High Transmission Protective (Vandal Proof) IR Filter with **CleanLITE®** Technology

Finish

Black Anodised

Power Cable

3m (9ft) including Photocell Following Contact & Remote Telemetry Input

Pressure Equalisation Vent

Prevents Thermal Expansion & Pressure Cycling

Photocell

Adjustable 20 -70 Lux

Illumination

Adjustable 10% - 100%

Operating Temperature

-50° to 50°C (-58° to 122°F)

Weight

1.35Kg (3lbs)

Mount

Powder Coated Stainless Steel Wall Mount

Dimensions

161 x 110 x 78mm (6.34" x 4.33" x 3.07")

ELECTRICAL

Input Voltage

12-32V DC or 24V AC +/- 10%

Input Current

1.6A at 24V AC

Consumption

39W

WAVELENGTH

Standard

850nm (Semi Covert). Faint Red Glow Only

Optional

940nm (Covert). Minimal Visible Glow

CERTIFICATION

Safety

EN60598:2004

Electrical Safety

EN60825-1

Laser Eye Safety

IP

IP66 In Accordance With EN60529;1992

EMC

EN61000, FCC Part 15. 107

15. 108 Class B

WEEE

Waste Electrical & Electronic Equipment European Directive 202/96/EC

RoHS

Restriction Of Hazardous Substance European Directive 202/95/EC

