



## D-TECT Range Accessories

### D-TECT Walk Tester - GJD380

An installation tool to help set up D-TECT's on site

- Power 9VDC (PP3 Cell)
- Current Standby: 0.5mA
- Operating: 30mA
- Operating Temp: -20°C to +55°C



### D-TECT Conduit Cable Entry Adaptor - GJD304

For surface mount conduit/cable installations. Complete with integral wall tamper system

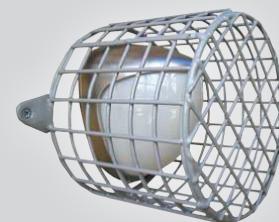
- Suitable for 20mm conduit protected surface run cables
- Integrated rear tamper mechanism designed to perfectly interface with rear tamper plunger fitted on all D-TECT's
- Supplied with D-TECT body locking screws plus wall fixings



### D-GUARD - (D-TECT, Elite & Opal) - GJD308

Steel wire plastic coated guard

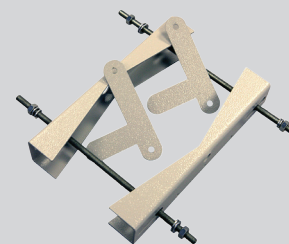
- 26mm 2 steel wire mesh, plastic coated
- 180mm diameter
- 160mm deep
- 2x fixing lugs with 8mm holes 225mm apart



### POLE MOUNT CLAMP - (D-TECT, Elite & Opal) - GJD305

For mounting GJD detectors on poles from 40mm to 170mm in diameter, max two detectors per clamp kit.

- Two coated metal pole clamps c/w threaded bar and locking nuts and washers
- Supplied with separate tamper plate and fixing screws



### D-TECT X Wireless Signal Strength & Walk tester - GJD394

GJD's D-TECT X signal strength tester is an installation tool to aid the set up of D-TECT X wireless detectors. The tester measures signal strength from the detector at the receiver location and indicates if the detector is active by a simple walk test.



Please note GJD reserve the right to change the information within this document, without notice.

[www.gjd.co.uk](http://www.gjd.co.uk) | [info@gjd.co.uk](mailto:info@gjd.co.uk) | +44 (0) 1706 363 998

Unit 2 Birch Business Park, Whittle Lane, Heywood, Greater Manchester, OL10 2SX, UK

DS303-10-05-15

